

# Technical Stuff

## Checking for Alcohol

RAA



AIRCRAFT SPRUCE sells a handy \$6.00 tester that can be used to check for water in the gascolator and at other drain points in the fuel system. It is also usable to determine if there is alcohol in auto fuel. On the side of the gauge there are two fill lines. Pour water into the tester until it is exactly at the water line. Then add the fuel to be tested, filling to the upper line.

Put your thumb over the end of the tester and shake it vigorously. Let

the tester stand for a few minutes and check the height of the water line. If it has risen, this means that the fuel has alcohol in it, and the scale on the side tells the percentage.

Besides testing for water and alcohol, this tester has a chuck on the end that holds a double ended screwdriver bit, one end straight and the other end Philips.

Transporting fuel in a vehicle can be a smelly exercise as the fuel

## COPA *is* personal aviation

Join now and support aviation in Canada today!



### Canadian Owners and Pilots Association

207 - 75 Albert Street,  
Ottawa, ON,  
K1P 5E7

Tel.: 613-236-4901,

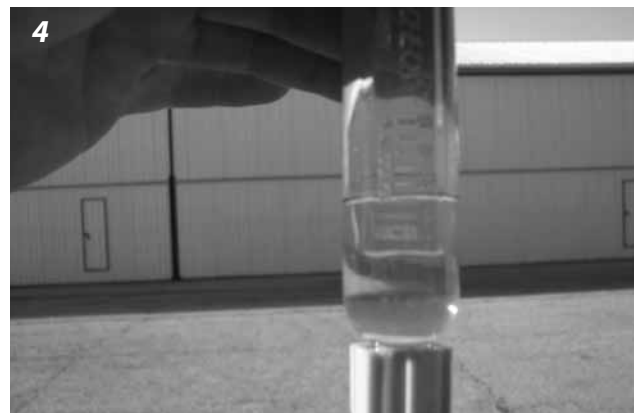
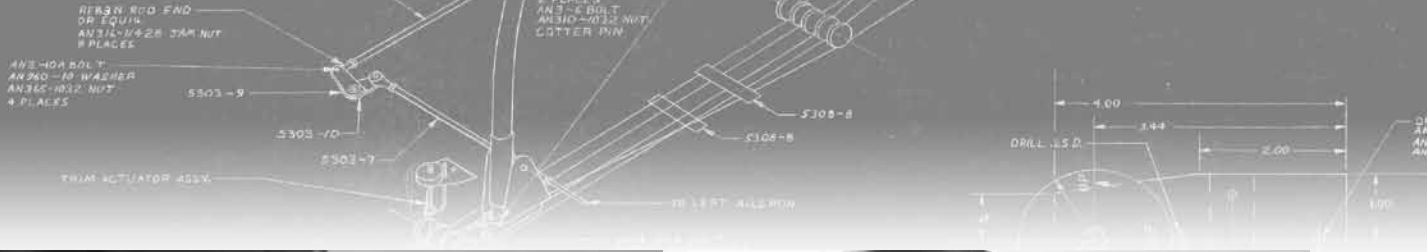
Fax: 613-236-8646

E-mail:

[copa@copanational.org](mailto:copa@copanational.org)

Web site:

[www.copanational.org](http://www.copanational.org)



- 1) fill with water to the lower line, and then with fuel to the top line. 2) shake well.
- 3) let stand for a few minutes. The screwdriver end can be jammed into the ground.
- 4) If there is any alcohol, the water line will have risen and the percentage of alcohol may be read on the graduations.
- 5) Squeeze the gas can between your knees or against the car's wheel while tightening the caps.

warms up and expands, and its vapour pressure rises. Most important is to resist the temptation to fill the can to the top. To allow for expansion, instead stop at the fill line that is usually a few inches below the top. Next, just before cinching the caps tight, squeeze the can's sides with your knees and while doing this tighten the caps. This will ensure that even if the fuel warms up it will not gas off, and with good planning this will not happen until after you arrive at the airport.

Some provinces have a law to limit the amount of fuel that may be carried. Check the law in your own province. **R**